

EQUIP. TYPE R-390A/URR EXP. NO.

COL. 558-0759-002

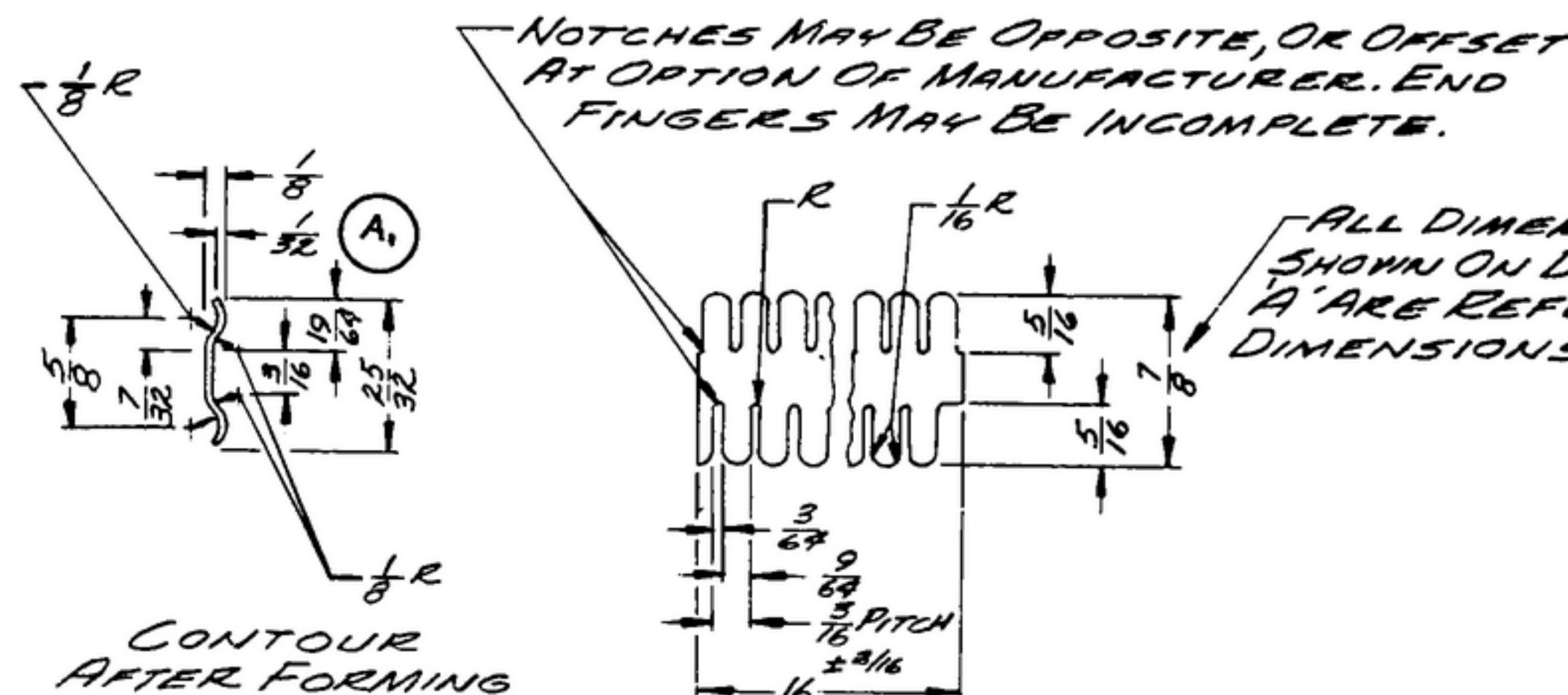
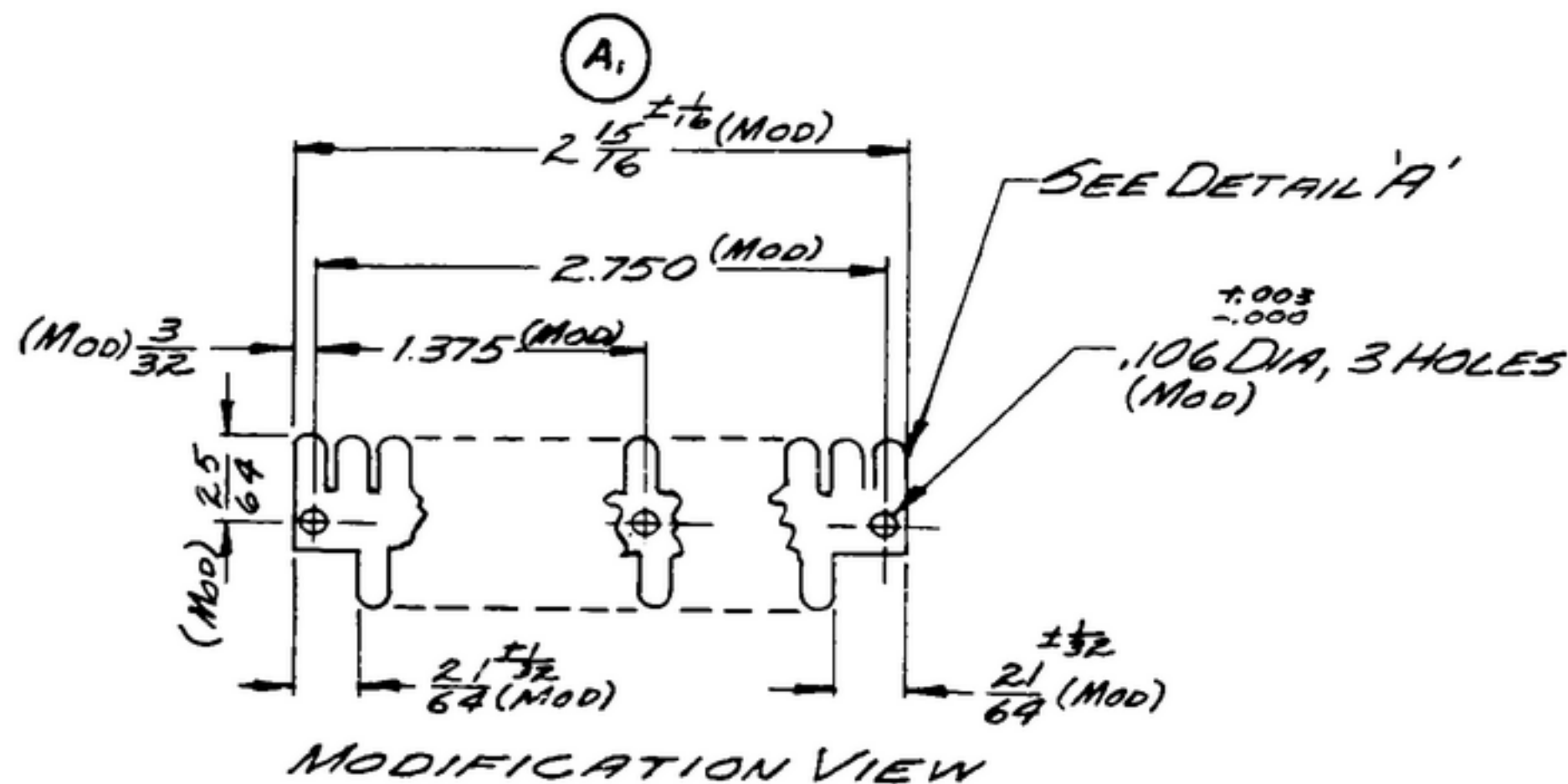
NOTICE: WHEN GOVERNMENT DRAWINGS, SPECIFICATIONS, OR OTHER DATA ARE USED FOR ANY PURPOSE OTHER THAN IN CONNECTION WITH A DEFINITELY RELATED GOVERNMENT PROCUREMENT OPERATION, THE UNITED STATES GOVERNMENT THEREBY INCURS NO RESPONSIBILITY FOR ANY DELAYATION WHATSOEVER, OR IN ANY WAY SUPPLIES THE SAID DRAWINGS, SPECIFICATIONS, OR OTHER DATA IS NOT TO BE REGARDED AS IMPLICATION OR OTHERWISE AS IN ANY MANNER LICENSING THE HOLDER OR ANY OTHER PERSON OR CORPORATION, OR CONVEYING ANY RIGHTS OR PERMISSION TO MANUFACTURE, USE, OR SELL ANY PATENTED INVENTION THAT MAY IN ANY WAY BE RELATED THEREBY.

THIS DOCUMENT HAS BEEN PURCHASED BY THE GOVERNMENT AND MAY BE REPRODUCED AND USED IN CONNECTION WITH ANY GOVERNMENT PROCUREMENT OR MAINTENANCE OPERATION.

* FOR INFORMATION ONLY. CONTRACTOR MAY AT HIS OPTION DEVIATE FROM THESE PROCESS DETAILS.

~~FSWE APPROVAL~~
SYM FR10042-B

REVISIONS			
SYM	DESCRIPTION	DATE	APPROVAL
A.	A, 19/64 WAS 2 5/16 WAS 2 5/16	27 OCT 59	4292B PC 59-A1-51 REV'D PME



ALL DIMENSIONS SHOWN ON DETAIL 'A' ARE REFERENCE DIMENSIONS

- NOTES:
- PART MAY BE NO. 97-115-H AS SUPPLIED BY INSTRUMENT SPECIALTIES CO. INC., LITTLE FALLS, N.J., OR EQUAL, MODIFIED AS SHOWN AND SHALL MEET THE FOLLOWING REQUIREMENTS AND DIMENSIONS SHOWN.
 - DETAIL A SHOWS PART AS SUPPLIED BY THE MANUFACTURER.
- DESCRIPTION:
BERYLLIUM COPPER (288E).0050 THICK DOUBLE EDGE PREFORMED.
FINISH: AS HEAT TREATED.

COLLINS PART NO.	ITEM	REQD	PART NO.	DESCRIPTION	MATL	MATL SPEC
LIST OF MATERIAL						
COLLINS PART NO. <u>558-0759-002</u>						

DRAWN <u>D. WRIGHT</u>				CHECKED <u>EG</u>		APPROVED		COLLINS-RADIO-60- GEAR-PAPER, IOWA 14214-PH- 51-93		DEPARTMENT OF THE ARMY SIGNAL CORPS ENGINEERING LABORATORIES FORT MONMOUTH NEW JERSEY	
558-0759-002 R				558-249036		558-249775		SIGNAL CORPS REVIEWED <u>PME</u> APPROVED <u>HLV</u> <u>PME</u>			
COLLINS NO. <u>558-0759-002</u>				NEXT ASSY		USED ON		DATE <u>3 SEPT 58</u> SCALE <u>1/1</u>		CONTACT-FINGER <u>558-249028</u>	
APPLICATION											

PD-704-474-2071-10-A4706-298547

WHEN REFERRING TO THIS DRAWING STATE DRAWING NO., APPLICABLE ISSUE SYMBOL, IF ANY, AND DATE